

Mid-term examples



Budapest University of Technology and Economics



Department of
Telecommunications and Media Informatics

Questions

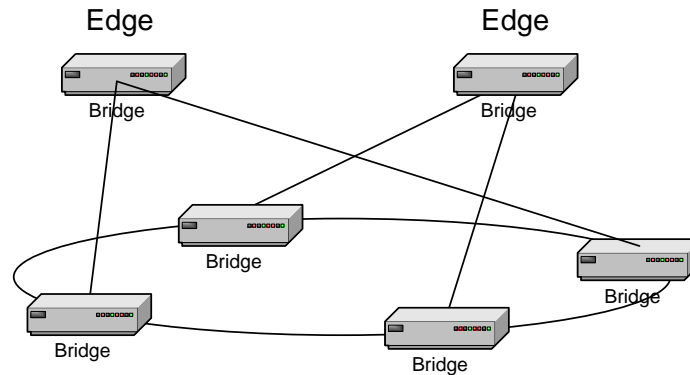


- 10 questions, half theoretical, half practical
- Theoretical questions like:
 - Short answers (1-2 sentences)
 - Ex1: What is a VLAN and how does it work?
 - Ex2: What is the difference between passive and active optical networks? Which are the advantages/disadvantages?
 - Practical
 - To be solved
 - Examples from labs

Practical examples - 1



- STP/MSTP



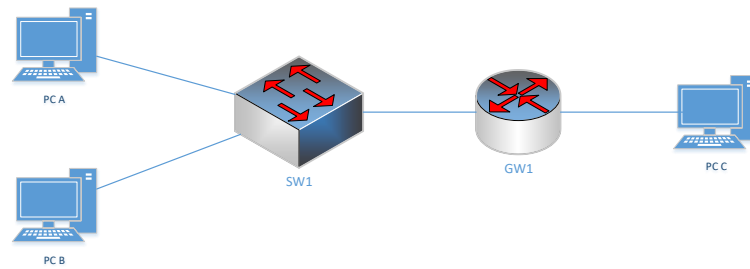
- Given the topology, draw the resulting tree
 - RSTP
 - MSTP: root selection

Practical examples - 2



BME-TMIT

- Packet forwarding on the example topology
 - Ethernet, ARP, IP



Practical examples - 3



- IP addressing
 - IP addresses – are they on the same subnet?
- Routing table
 - Longest prefix match
- CIDR
 - reduce routing table

Mid-term date: 6th Nov.



Budapest University of Technology and Economics



Department of
Telecommunications and Media Informatics